



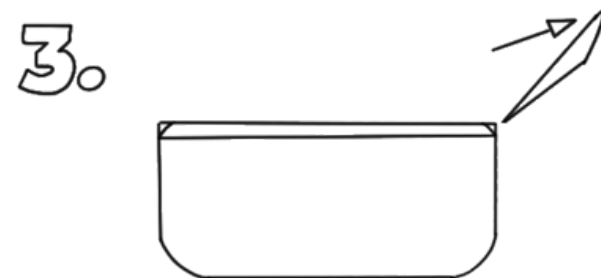
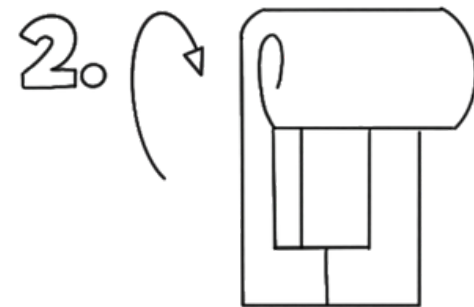
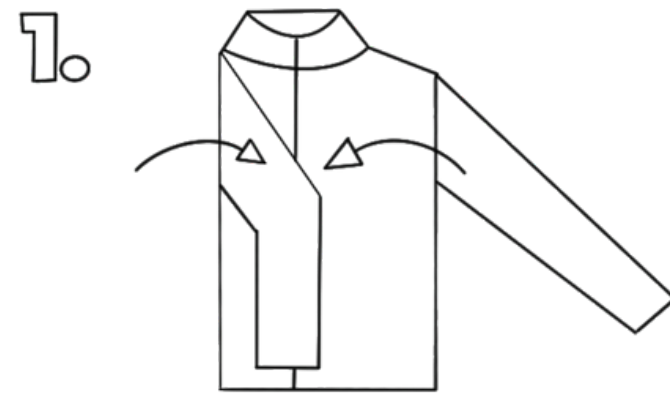
# CHAMARRA TIPO ALMOHADA



## Características

Nylon Capitonado con relleno ultra suave.

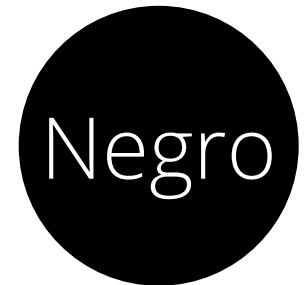
Práctico HandBag integrado a la chamarra.



## Tallas

CH, M, EG, EEG

**Nuevo  
Modelo y  
colores**





# CHAMARRA ELITE



## Características

Tela tipo Neopreno.  
Interior: Forro afelpado.  
2 bolsas laterales con cierre.  
Corte Dama y Caballero.

## Tallas

Regulares: CH, M, G, XG  
Extras: XXG





# CHAMARRA SPORT



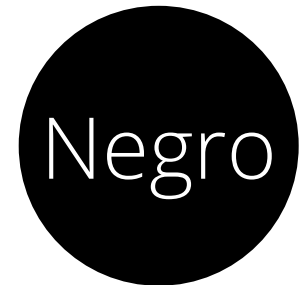
## Características

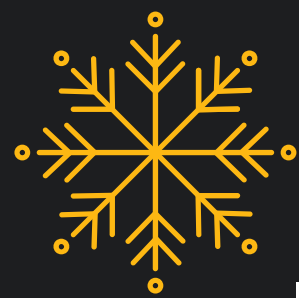
Nylon Capitonado con relleno ultra suave.

Dama y Caballero

## Tallas

CH, M, EG, EEG





# CHAMARRA CAZADORA

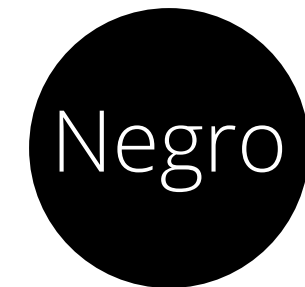


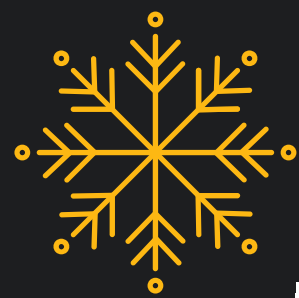
## Características

Exterio: Nylon  
Interior: Polar Nylon  
Repelente al agua  
2 Bolsas y Cierre.

## Tallas

CH, M, EG, EEG





# CHAMARRA ROMPEVIENTOS



## Características

Unisex

100% Nylon con forro,  
capucha y cierre  
reflejante

## Tallas

CH, M, EG, EEG

Azul  
Marino

Negro

